



**MORALT**  
the core of the door

**FERRO FireSafe KlimaSoft/FireSafe Akustik**

THE FIRE RESISTANT LIFE-SAVER.



New  
decors and  
sizes



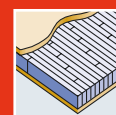
5-ply faces



Exterior grade  
MDF faces



Flat steel  
stabilizer



Laminated  
core



Fire  
protection



Acoustic  
insulation



Robust  
construction



Reliable and safe door solutions  
[www.moralt-ag.com](http://www.moralt-ag.com)

# TECHNICAL DETAILS

1/8 DOOR FRAME		
1 Framing/timber	Finger-jointed and laminated timber framing.	
8 Flat steel stabilizer	Flat steel stabilizer – thermally separated and sound insulated – to absorb tractive and shearing forces. Stabilizers are glued and friction-locked with the framework.	
Frame width/Options to shorten/Glass apertures	Thickness of door blank 68 mm - 98 mm	
	Frame width in mm	can be trimmed by
	Top	127 75*
	Side	lock-side 80/hinge-side 127 25*/75*
	Bottom	127 75*
Minimum distance for glass apertures on all 4 sides: 180 mm. The frame width corresponds to the shortening dimension. When trimmed by a maximum (75 mm) at the bottom side, a single rebate (max. 18 mm) or fitting of drop down seal is possible.		
2 INNER LAYER		
Construction	– Sandwich construction of laminated core (spruce) and ecological wood fibre insulation, model FireSafe Akustik including sound insulation – Surface stability through vertically aligned annual rings	
Bonding	Free of formaldehyde	
3-7 COVER BOARD		
Bonding	AW bonding according to DIN 68705 -2 – 5 layers (noble veneer, longitudinal) – 3 layers (cross grained veneer) = can be veneered individually Full-surface bonding with the overall construction	
EXTERNAL DOOR BLANK		
Model/finish	Cut and sanded	
Processing information	With FERRO FireSafe external door blanks you can easily manufacture fire resistant external doors. Please contact us and we will provide you with the relevant documents. Please be aware of the nationally stipulated usability certificates. For further information, please view: brandschutz@moralt-aa.de	

\* with a max. rebate of 30 mm

## CERTIFICATION

FERRO FIRESAFE KLIMASOFT/FIRESAFE AKUSTIK	FireSafe	FireSafe Akustik
LENGTH IN MM	bis 2,470	bis 2,470
WIDTH IN MM	bis 1,230	bis 1,230
THICKNESS IN MM	68-98	68-98
DIFFERENT CLIMATE TESTING		
DIN EN 1121 : 2000-09	test climate c, d, e	Prüfklimate c, d, e
TOLERANCE CLASSES (by using three hinges)		
DIN EN 12219 : 2000-06	3	3
THERMAL TRANSFER COEFFICIENT		
U-value (W/m²K) DIN EN ISO 10077-2 : 2012-06	1,02 - 0,8	1,2 - 0,9
SOUND INSULATION		
DIN EN ISO 717-1 $R_{w,p}$ (dB)	31-37	42-47*
FIRE RESISTANCE		
BS / EN 16034	EI30**	EI30**
BURGLAR-RESISTANCE		
DIN EN 1627 : 2011-09	RC2/RC3	RC2/RC3
WEIGHT: 2,240 X 1,050 MM KG/PIECE	70-98	88-121

\* Element thickness 88 mm \*\* depends on nationally stipulated usability certificates



## PRODUCT RANGE

FERRO FIRESAFE KLIMASOFT/FIRESAFE AKUSTIK – 68 MM / 78 MM / 88 MM / 98 MM								
Length in mm	2,110 (1,890*)		2,240 (2,020*) / 2,370 (2,150*)		2,470 (2,250*)			
Width in mm	950	1,050	950	1,050	1,150	1,230	950	1,050
Mahogany	▲	▲	▲	▲	▲	▲	▲	▲
Okoumé/Gabun	▲	▲	▲	▲	▲	▲	▲	▲
Meranti	▲	▲	▲	▲	▲	▲	▲	▲
Oak	▲	▲	▲	▲	▲	▲	▲	▲
Knotty oak	▲	▲	▲	▲	▲	▲	▲	▲
Cross-grain knotty oak 3.5 mm	▲	▲	▲	▲	▲	▲	▲	▲
Rustic knotty oak	▲	▲	▲	▲	▲	▲	▲	▲
Pine	▲	▲	▲	▲	▲	▲	▲	▲
Spruce	▲	▲	▲	▲	▲	▲	▲	▲
Larch	▲	▲	▲	▲	▲	▲	▲	▲
Knotty larch	▲	▲	▲	▲	▲	▲	▲	▲
White fir	▲	▲	▲	▲	▲	▲	▲	▲
Paint-grade	▲	▲	▲	▲	▲	▲	▲	▲
MDF Exterior	▲	▲	▲	▲	▲	▲	▲	▲
CPL	▲	▲	▲	▲	▲	▲	▲	▲
FERRO FIRESAFE KLIMASOFT/FIRESAFE AKUSTIK – 66 MM / 76 MM / 86 MM / 96 MM								
Cross grained PV	▲	▲	▲	▲	▲	▲	▲	▲

\* minimal dimension ▲ available in 5 working days PV = peeled veneer face All veneer surfaces = cut veneer or fine-line

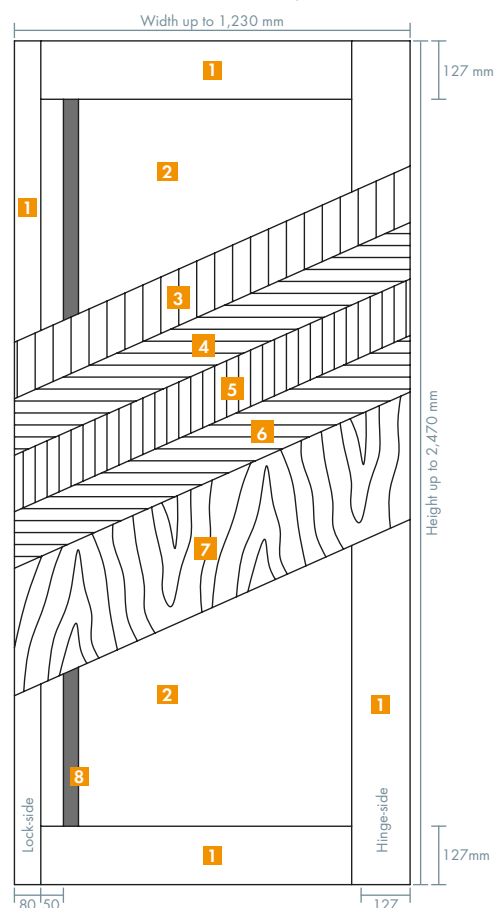
Further dimensions, sizes and facings on request.



Any Questions? Info-Hotline: +49 8026 92538-11 www.moralt-ag.com
Moralt AG, Obere Tiefenbachstraße 1, 83734 Hausham, Phone: +49 8026 92538-0, Fax: +49 8026 92538-40, E-mail: vertrieb@moralt-ag.de

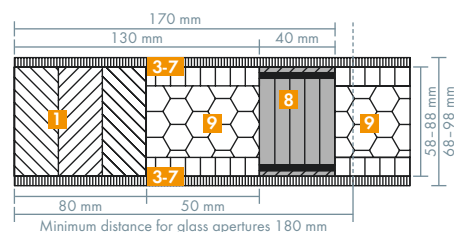
This information is according to the present state of knowledge and does not represent an assurance of properties. Existing laws and regulations are to be followed by the recipient of our products at his own responsibility. All information refers solely to products by Moralt AG.

## FERRO FireSafe KlimaSoft/FireSafe Akustik

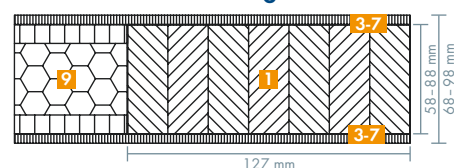


- 1 Solid timber frame
- 2 Sandwich system
- 3-7 Cover board
- 8 Flat steel stabilizer
- 9 Ecological wood fibre insulation

### Cross-section view lock-side



### Cross-section view hinge side



### CNC-processing service

CNC processing on request.

### Despatch of single cargo

Direct delivery of a single pieces to the manufacturer is possible.