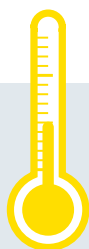




MORALT
the core of the door

FERRO Passiv/PassivKlima

THE ENERGY SAVER FOR LOWER HEATING COSTS.



New
decors and
sizes



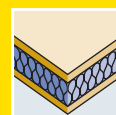
5-ply faces



Exterior grade
MDF faces



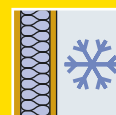
Flat steel
stabilizer



PU hard
foam core



Robust
construction



Passive-house
compliant



Reliable and safe door solutions
www.moralt-ag.com

TECHNICAL DETAILS

1/8 DOOR FRAME		
1 Framing/timber	Finger-jointed and laminated timber framing.	
8 Flat steel stabilizer	Lock-side flat steel stabilizer – thermally separated and sound insulated – to absorb tractive and shearing forces. Stabilizers are glued and friction-locked with the framework.	
Frame width/Options to shorten/Glass apertures	Thickness of door blank 98 mm	
	Frame width in mm	can be trimmed by
	Top	70 10*
	Side	70 10*
	Bottom	70 10*
Minimum distance for glass apertures on all 4 sides: 180 mm. The frame width corresponds to the shortening dimension. When trimmed by a maximum at the bottom (10 mm), a single rebate (max. 18 mm) or fitting of drop down seal is possible.		
2 INNER LAYER		
Construction	– Sandwich construction of laminated core (spruce) and HCFC-free and environmentally compatible PU hard foam – PassivKlima with ecological solid timber insulation – Surface stability through vertically aligned annual rings	
Bonding	Free of formaldehyde	
3-7 FACING		
Bonding	AW bonding according to DIN 68705 -2 – 5 layers (noble veneer, longitudinal) Full-surface bonding with the overall construction	
EXTERNAL DOOR BLANK		
Model/finish	Cut and sanded	
Processing information	With FERRO Passive external door blanks you can manufacture doors systems with a U-value, lower than 0.8 W/m²K). Please contact us and we will provide you with the relevant documents.	

* with a max. rebate of 30 mm

CERTIFICATION

FERRO PASSIV/PASSIVKLIMA	Passiv	PassivKlima
LENGTH IN MM	upto 2,600	upto 2,600
WIDTH IN MM	upto 1,230	upto 1,230
THICKNESS IN MM	98	98
DIFFERENT CLIMATE TESTING		
DIN EN 1121 : 2000-09	test climate c, d, e	test climate c, d, e
TOLERANCE CLASSES (by using three hinges)		
DIN EN 12219 : 2000- 6	3*	3*
THERMAL TRANSFER COEFFICIENT		
U-value (W/m²K) DIN EN ISO 10077-2 : 2012-06	0,54	0,69
SOUND INSULATION		
DIN EN ISO 717-1 R _w (dB)	30-42**	32
BURGLAR-RESISTANCE		
DIN EN 1627 : 2011-09	RC2/RC3*	RC2/RC3*
WEIGHT: 2,240 X 1,050 MM KG/PIECE	70	80

* certified upto height 2,470 mm ** for version Akustik

PfB Prüfzentrum für Bauelemente
Dipl.-Ing. (FH) Rüdiger Müller
Ladenweg 24 • D-63071 Heppenheim (Bsp. Passivhaus)

PRODUCT RANGE

FERRO PASSIV/PASSIVKLIMA – 98 MM										
Length in mm	2,110 (2,090*)	2,240 (2,220*)	2,370 (2,350*)	2,470 (2,450*)	2,600 (2,580*)					
Width in mm	950	1,050	950	1,050	1,150	1,230	950	1,050	1,150	1,230
Mahogany	▲	▲	▲	▲	▲	▲	▲	▲	▲	▲
Okoumé/Gabun	▲	▲	▲	▲	▲	▲	▲	▲	▲	▲
Meranti	▲	▲	▲	▲	▲	▲	▲	▲	▲	▲
Oak	▲	▲	▲	▲	▲	▲	▲	▲	▲	▲
Knotty oak	▲	▲	▲	▲	▲	▲	▲	▲	▲	▲
Knotty oak 3.5 mm**	▲	▲	▲	▲	▲	▲	▲	▲	▲	▲
Rustic knotty oak	▲	▲	▲	▲	▲	▲	▲	▲	▲	▲
Pine	▲	▲	▲	▲	▲	▲	▲	▲	▲	▲
Spruce	▲	▲	▲	▲	▲	▲	▲	▲	▲	▲
Larch	▲	▲	▲	▲	▲	▲	▲	▲	▲	▲
Knotty larch	▲	▲	▲	▲	▲	▲	▲	▲	▲	▲
White fir	▲	▲	▲	▲	▲	▲	▲	▲	▲	▲
Paint-grade	▲	▲	▲	▲	▲	▲	▲	▲	▲	▲
MDF Exterior	▲	▲	▲	▲	▲	▲	▲	▲	▲	▲
CPL	▲	▲	▲	▲	▲	▲	▲	▲	▲	▲

* minimal dimension ** cross-grain ▲ available in 5 working days

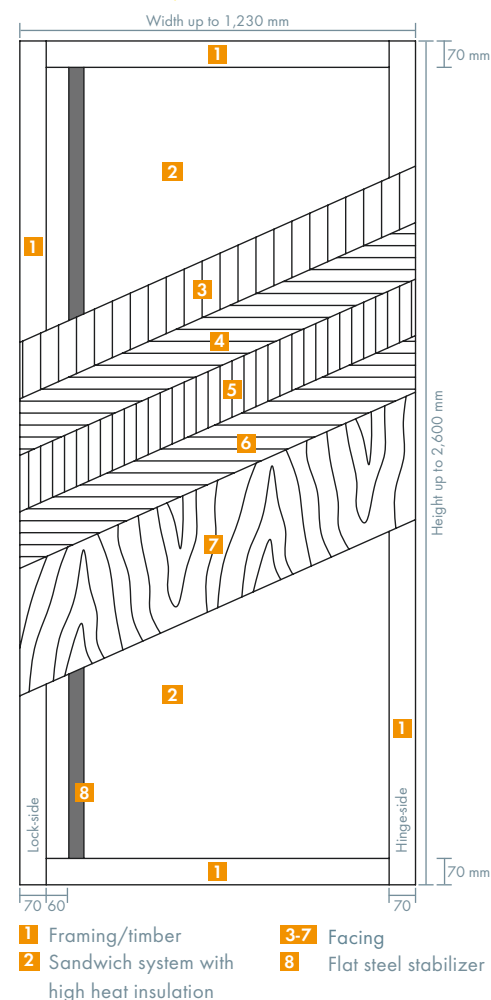
All veneer surfaces = cut veneer or fine-line

Further dimensions, sizes and facings on request.

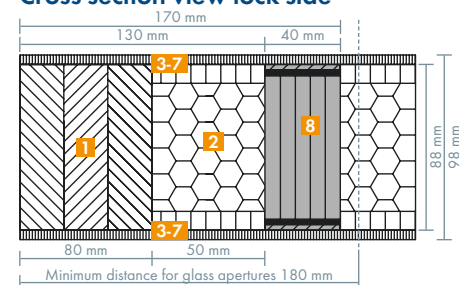
Any Questions? Info-Hotline: +49 8026 92538-11 www.moralt-ag.com
Moralt AG, Obere Tiefenbachstraße 1, 83734 Hausham, Phone: +49 8026 92538-0, Fax: +49 8026 92538-40, E-Mail: vertrieb@moralt-ag.de

This information is according to the present state of knowledge and does not represent an assurance of properties. Existing laws and regulations are to be followed by the recipient of our products at his own responsibility. All information refers solely to products by Moralt AG.

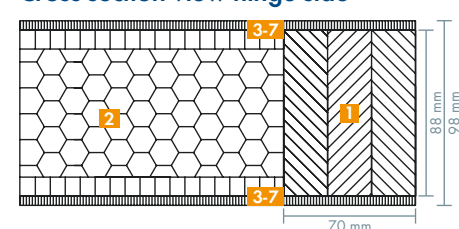
FERRO Passiv/PassivKlima



Cross-section view lock-side



Cross-section view hinge side



Despatch of single cargo

Direct delivery of a single pieces to the manufacturer is possible

CNC- processing service

All types may be delivered CNC processed.

