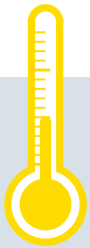
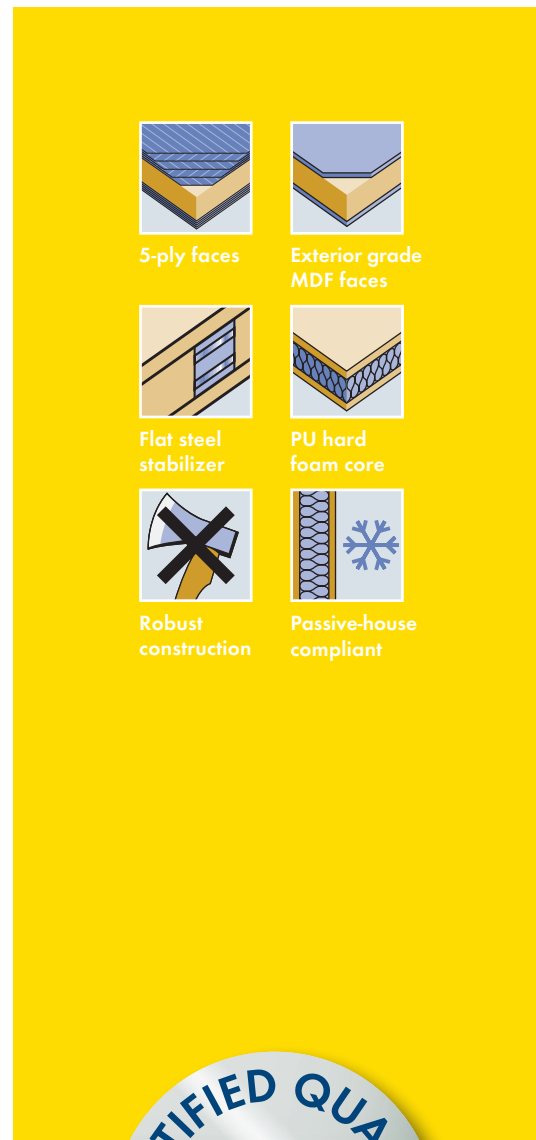


## FERRO Passiv/PassivKlima

# THE ENERGY SAVER FOR LOWER HEATING COSTS.



New  
decors and  
sizes



# TECHNICAL DETAILS

1/8 DOOR FRAME			
<b>1 Framing/timber</b>	Finger-jointed and laminated timber framing.		
<b>8 Flat steel stabilizer</b>	Lock-side patented flat steel stabilizer – thermally separated and sound insulated – to absorb tractive and shearing forces. Stabilizers are glued and friction-locked with the framework.		
<b>Frame width/Options to shorten/Glass apertures</b>	Thickness of door blank 98 mm		
	Frame width in mm	can be trimmed by	
	Top	70	10*
	Side	70	10*
	Bottom	70	10*
Minimum distance for glass apertures on all 4 sides: 180 mm. The frame width corresponds to the shortening dimension. When trimmed by a maximum at the bottom (10 mm), a single rebate (max. 18 mm) or fitting of drop down seal is possible.			
2 INNER LAYER			
<b>Construction</b>	– Sandwich construction of laminated core (spruce) and HCFC-free and environmentally compatible PU hard foam – PassivKlima with ecological solid timber insulation – Surface stability through vertically aligned annual rings		
<b>Bonding</b>	Free of formaldehyde		
3-7 FACING			
<b>Bonding</b>	AW bonding according to DIN 68705 -2 – 5 layers (noble veneer, longitudinal) Full-surface bonding with the overall construction		
EXTERNAL DOOR BLANK			
<b>Model/finish</b>	Cut and sanded		
<b>Processing information</b>	With FERRO Passive external door blanks you can manufacture doors systems with a U-value, lower than 0.8 W/m²K). Please contact us and we will provide you with the relevant documents.		

\* with a max. rebate of 30 mm

## CERTIFICATION

FERRO PASSIV/PASSIVKLIMA	Passiv	PassivKlima
<b>LENGTH IN MM</b>	upto 2,600	upto 2,600
<b>WIDTH IN MM</b>	upto 1,230	upto 1,230
<b>THICKNESS IN MM</b>	98	98
DIFFERENT CLIMATE TESTING		
DIN EN 1121 : 2000-09	test climate c, d, e	test climate c, d, e
TOLERANCE CLASSES (by using three hinges)		
DIN EN 12219 : 2000-6	3*	3*
THERMAL TRANSFER COEFFICIENT		
U-value (W/m²K) DIN EN ISO 10077-2 : 2012-06	0,54	0,69
SOUND INSULATION		
DIN EN ISO 717-1 R <sub>w</sub> ,(dB)	30-42**	32
BURGLAR-RESISTANCE		
DIN EN 1627 : 2011-09	RC2/RC3*	RC2/RC3*
<b>WEIGHT: 2,240 X 1,050 MM KG/PIECE</b>	70	80

\* certified upto height 2,470 mm \*\* for version Akustik

**PfB** Prüfzentrum für Bauelemente  
Dipl.-Ing. (FH) Rüdiger Müller  
Lohmannweg 24 • D-83071 Steppelerheide (bei Rosenheim)

## PRODUCT RANGE

FERRO PASSIV/PASSIVKLIMA – 98 MM										
Length in mm	2,110 (2,090*)	2,240 (2,220*) / 2,370 (2,350*)				2,470 (2,450*) / 2,600 (2,580*)				
Width in mm	950	1,050	950	1,050	1,150	1,230	950	1,050	1,150	1,230
Mahogany	▲	▲	▲	▲	▲	▲	▲	▲	▲	▲
Okoumé/Gabun	▲	▲	▲	▲	▲	▲	▲	▲	▲	▲
Meranti	▲	▲	▲	▲	▲	▲	▲	▲	▲	▲
Oak	▲	▲	▲	▲	▲	▲	▲	▲	▲	▲
Knoxy oak	▲	▲	▲	▲	▲	▲	▲	▲	▲	▲
Knoxy oak 3.5 mm**	▲	▲	▲	▲	▲	▲	▲	▲	▲	▲
Rustic knoxy oak	▲	▲	▲	▲	▲	▲	▲	▲	▲	▲
Pine	▲	▲	▲	▲	▲	▲	▲	▲	▲	▲
Spruce	▲	▲	▲	▲	▲	▲	▲	▲	▲	▲
Larch	▲	▲	▲	▲	▲	▲	▲	▲	▲	▲
Knoxy larch	▲	▲	▲	▲	▲	▲	▲	▲	▲	▲
White fir	▲	▲	▲	▲	▲	▲	▲	▲	▲	▲
Paint-grade	▲	▲	▲	▲	▲	▲	▲	▲	▲	▲
MDF Exterior	▲	▲	▲	▲	▲	▲	▲	▲	▲	▲
CPL	▲	▲	▲	▲	▲	▲	▲	▲	▲	▲

\* minimal dimension \*\* cross-grain ▲ available in 5 working days

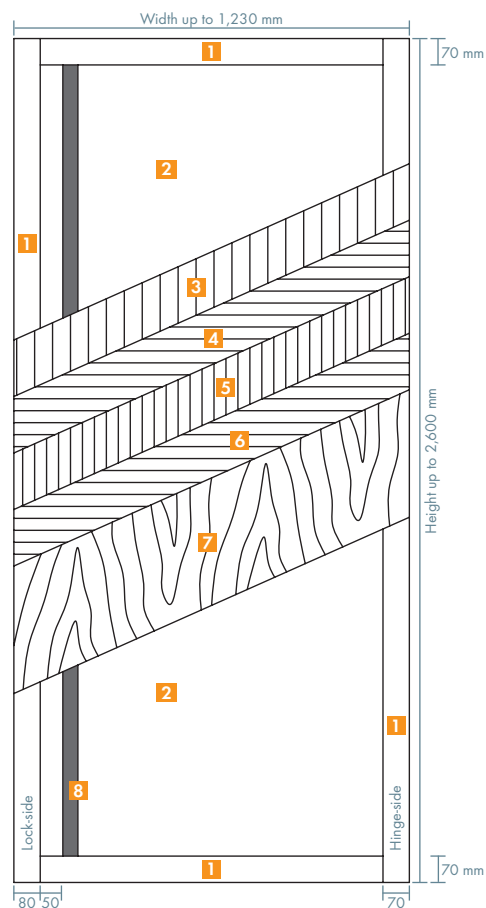
All veneer surfaces = cut veneer or fine-line

Further dimensions, sizes and facings on request.

**Any Questions?** Info-Hotline: +49 8026 92538-11 [www.moralt-ag.com](http://www.moralt-ag.com)  
Moralt AG, Obere Tiefenbachstraße 1, 83734 Hausham, Phone: +49 8026 92538-0, Fax: +49 8026 92538-40,  
E-Mail: [info@moralt-ag.de](mailto:info@moralt-ag.de)

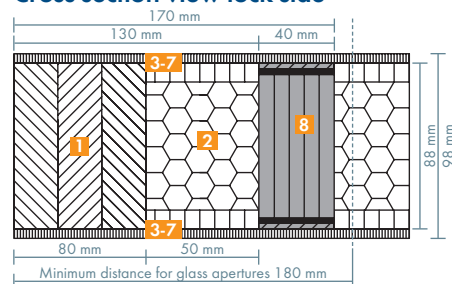
This information is according to the present state of knowledge and does not represent an assurance of properties. Existing laws and regulations are to be followed by the recipient of our products at his own responsibility. All information refers solely to products by Moralt AG.

## FERRO Passiv/PassivKlima

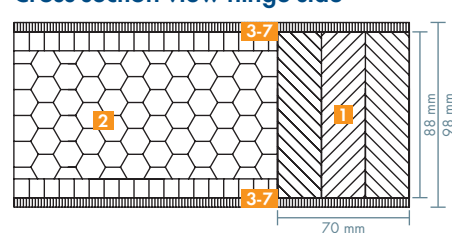


- 1 Framing/timber
- 2 Sandwich system with high heat insulation
- 3-7 Facing
- 8 Flat steel stabilizer

### Cross-section view lock-side



### Cross-section view hinge side



### Despatch of single cargo

Direct delivery of a single pieces to the manufacturer is possible

### CNC-processing service

All types may be delivered CNC processed.

Profi-Net timber distributor

